



*modern
cross stitch
patterns*

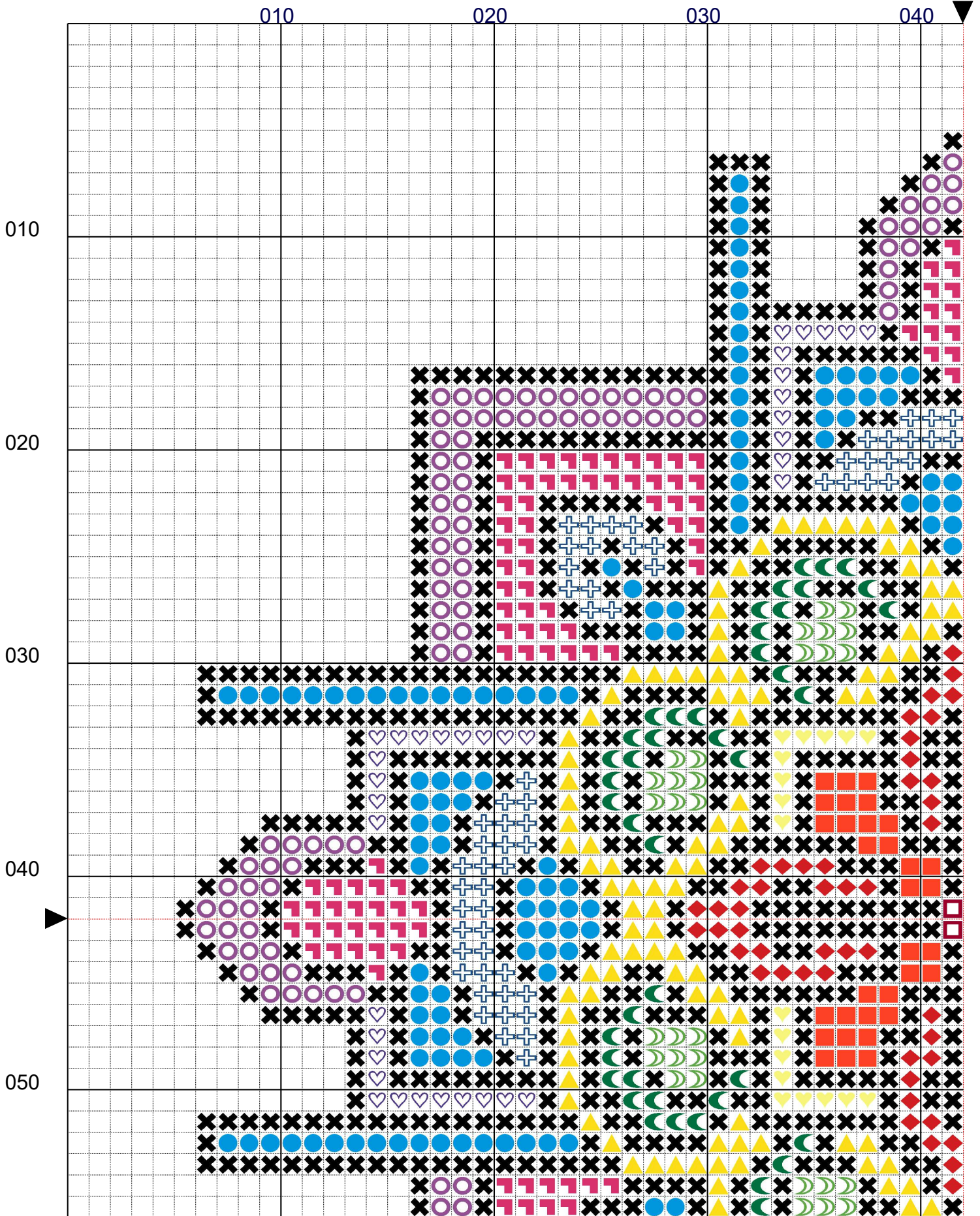
Geometric 1



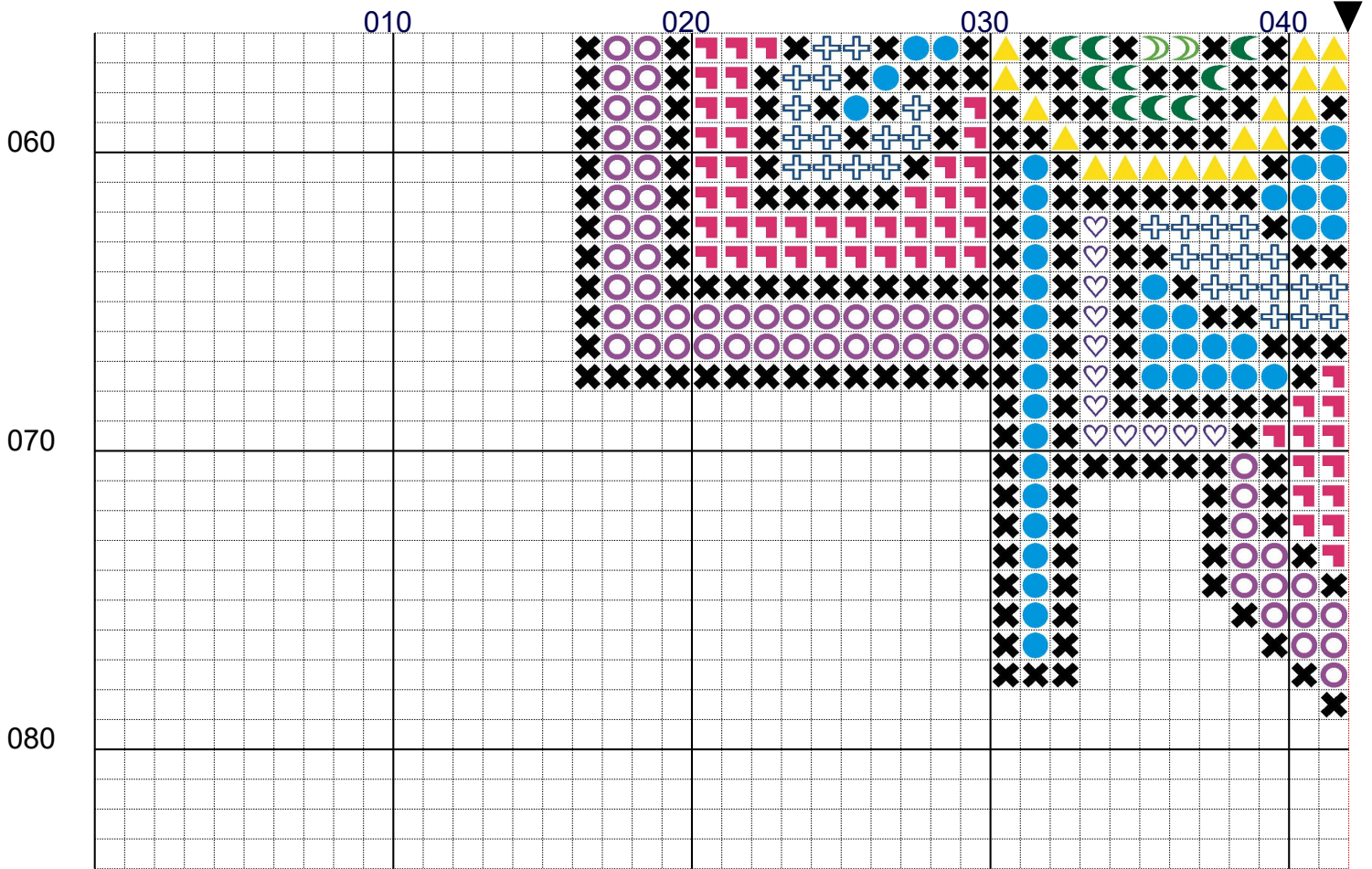
No. stitches: **3,401 (74 x 74)**

Canvas size (14 count Aida): **6" x 6" (15.2cm x 15.2cm)**

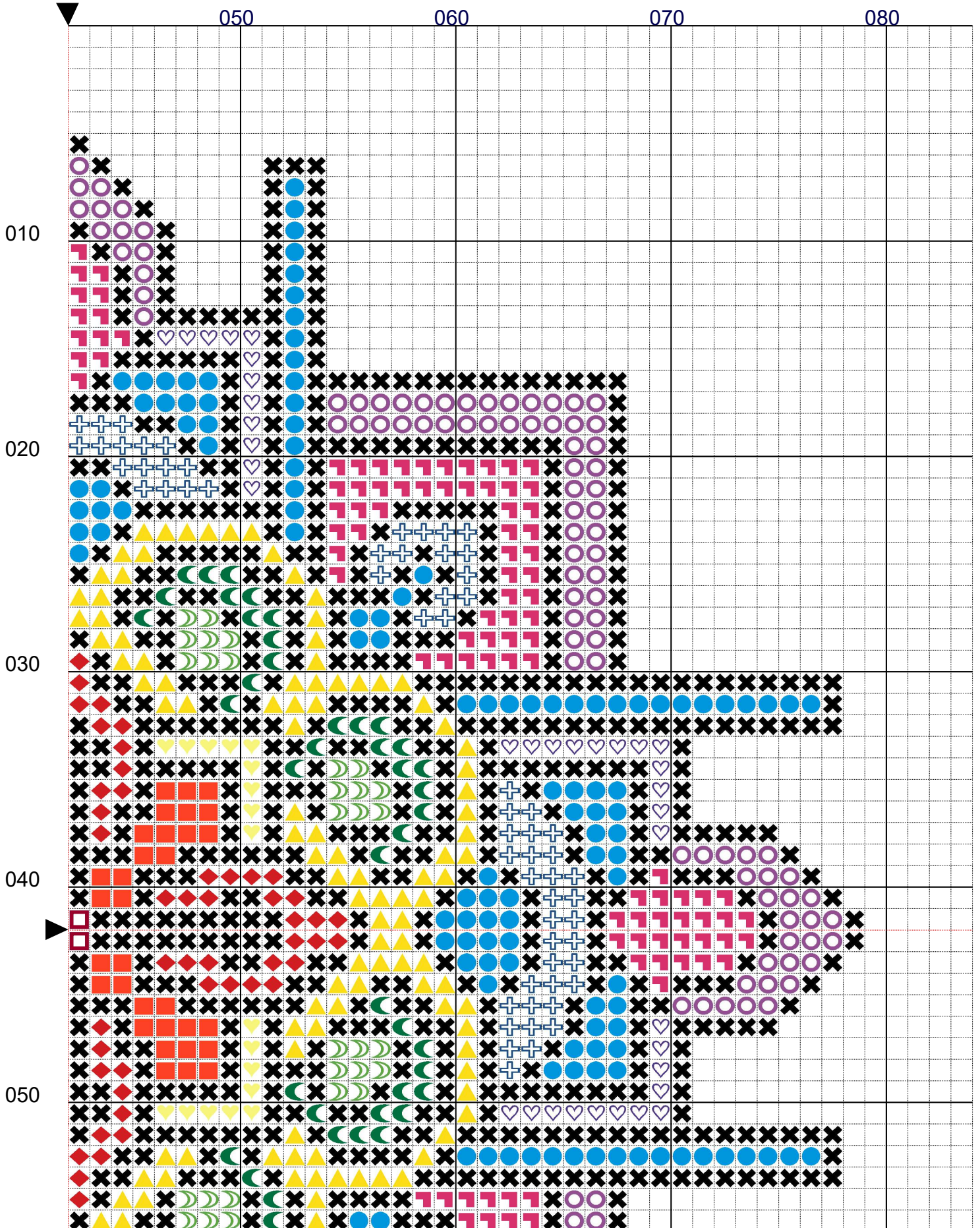
Geometric 1



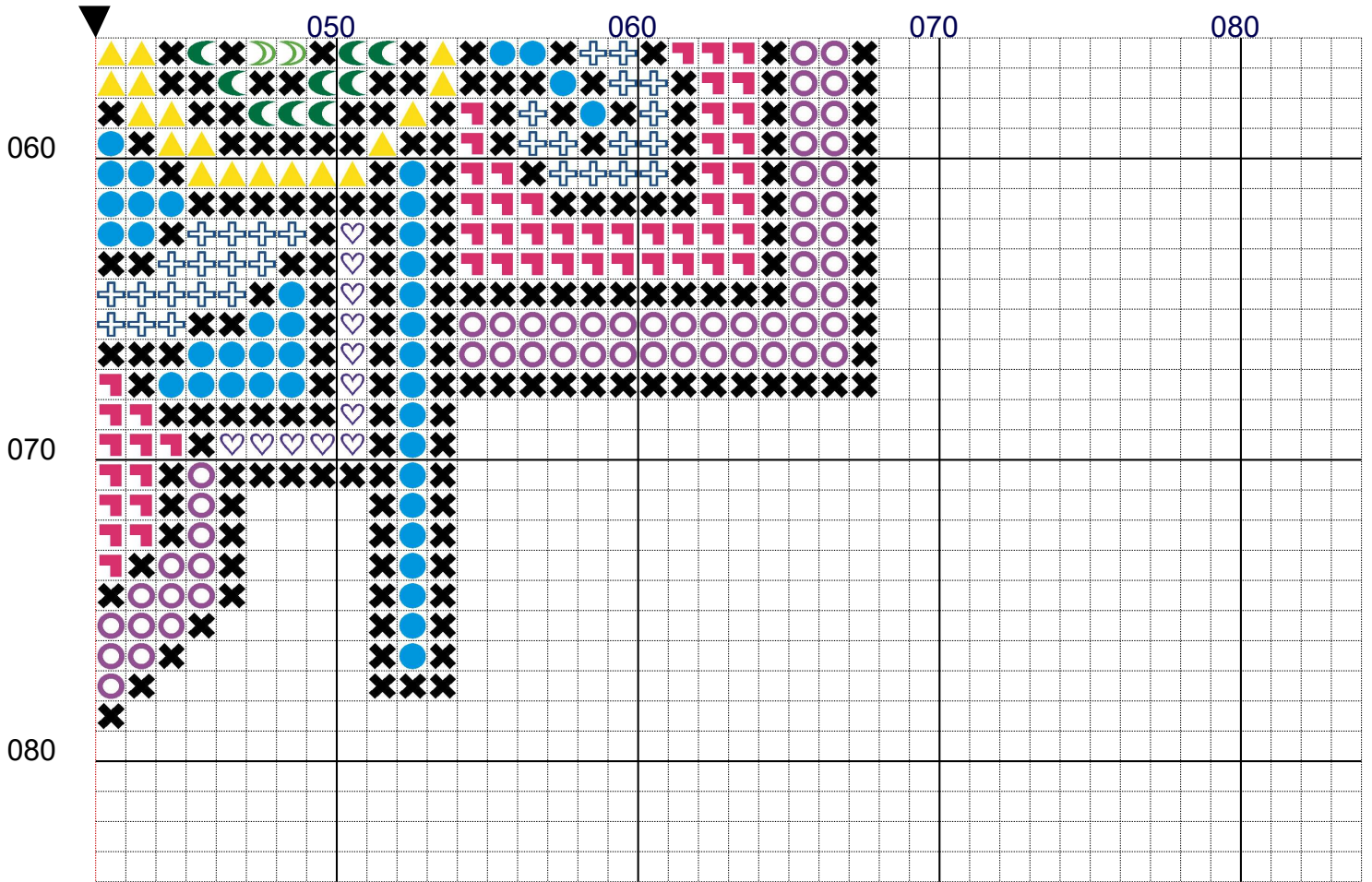
Geometric 1



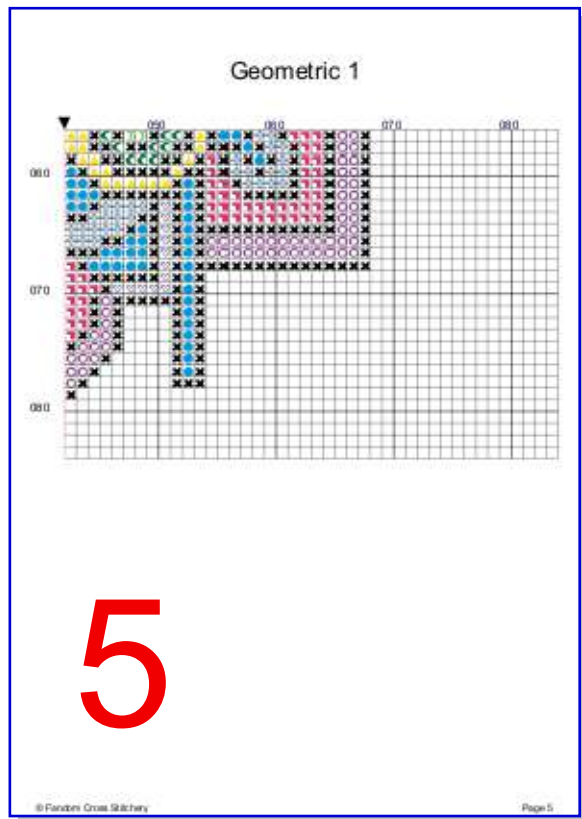
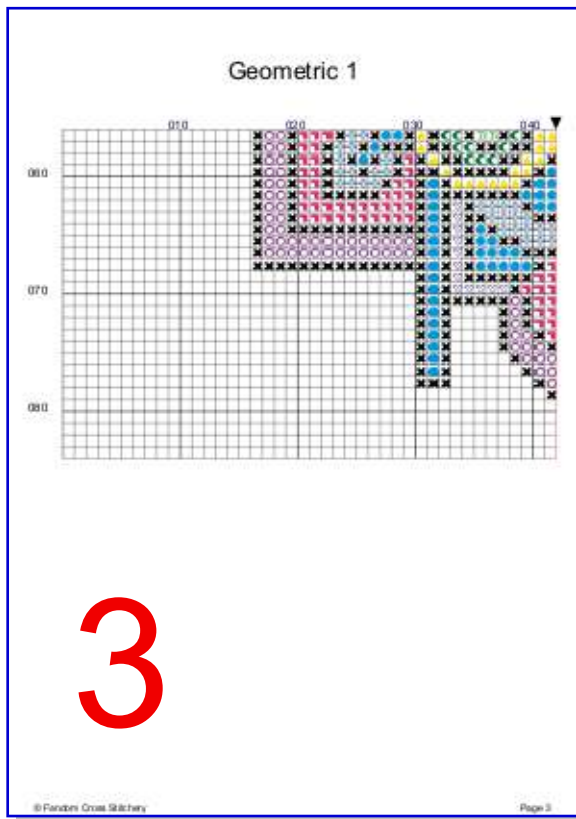
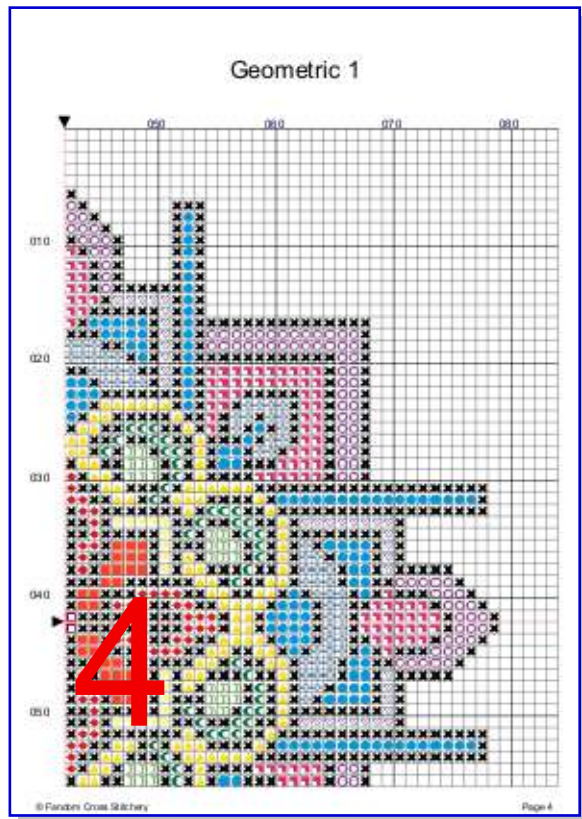
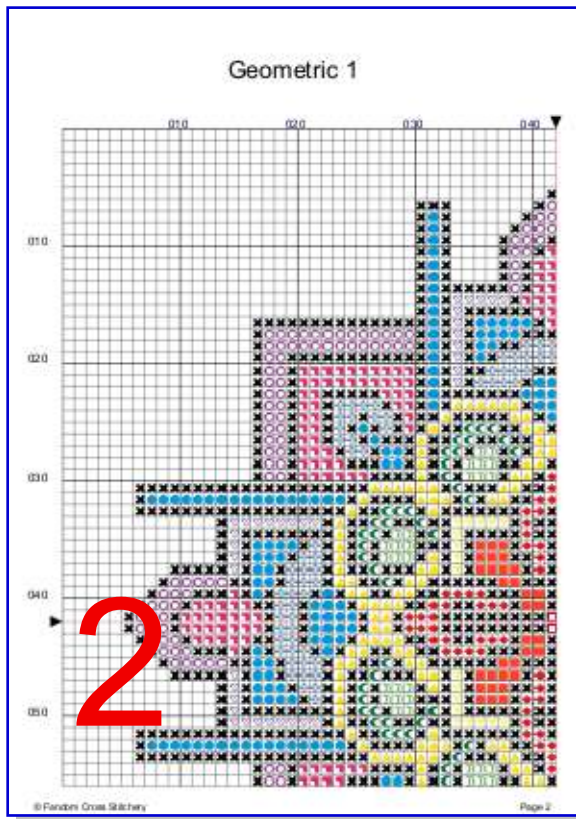
Geometric 1



Geometric 1



Geometric 1



Geometric 1

| | Number | Name: | Co mm | Bea ds | Str and | Length | Stitches |
|---|----------|------------------------|-------|--------|---------|------------|----------|
| ◻ | DMC 304 | Christmas Red medium | | 0 | 2 | 2.8 in. | 4 |
| ◈ | DMC 3801 | Christmas Red LT | | 0 | 2 | 68.0 in. | 96 |
| ■ | DMC 608 | Burnt Orange | | 0 | 2 | 45.3 in. | 64 |
| ▲ | DMC 307 | Lemon | | 0 | 2 | 175.6 in. | 248 |
| ▼ | DMC 445 | Lemon light | | 0 | 2 | 25.5 in. | 36 |
| ☾ | DMC 703 | Chartreuse | | 0 | 2 | 45.3 in. | 64 |
| ☾ | DMC 700 | Christmas Green bright | | 0 | 2 | 73.6 in. | 104 |
| ● | DMC 996 | Electric Blue medium | | 0 | 2 | 226.6 in. | 320 |
| ⊕ | DMC 825 | Blue dark | | 0 | 2 | 130.3 in. | 184 |
| ◼ | DMC 602 | Cranberry medium | | 0 | 2 | 215.2 in. | 304 |
| ○ | DMC 553 | Violet | | 0 | 2 | 215.2 in. | 304 |
| ♥ | DMC 333 | Blue Violet very dark | | 0 | 2 | 68.0 in. | 96 |
| ✖ | DMC 310 | Black | | 0 | 2 | 1115.8 in. | 1576 |