



*modern
cross stitch
patterns*

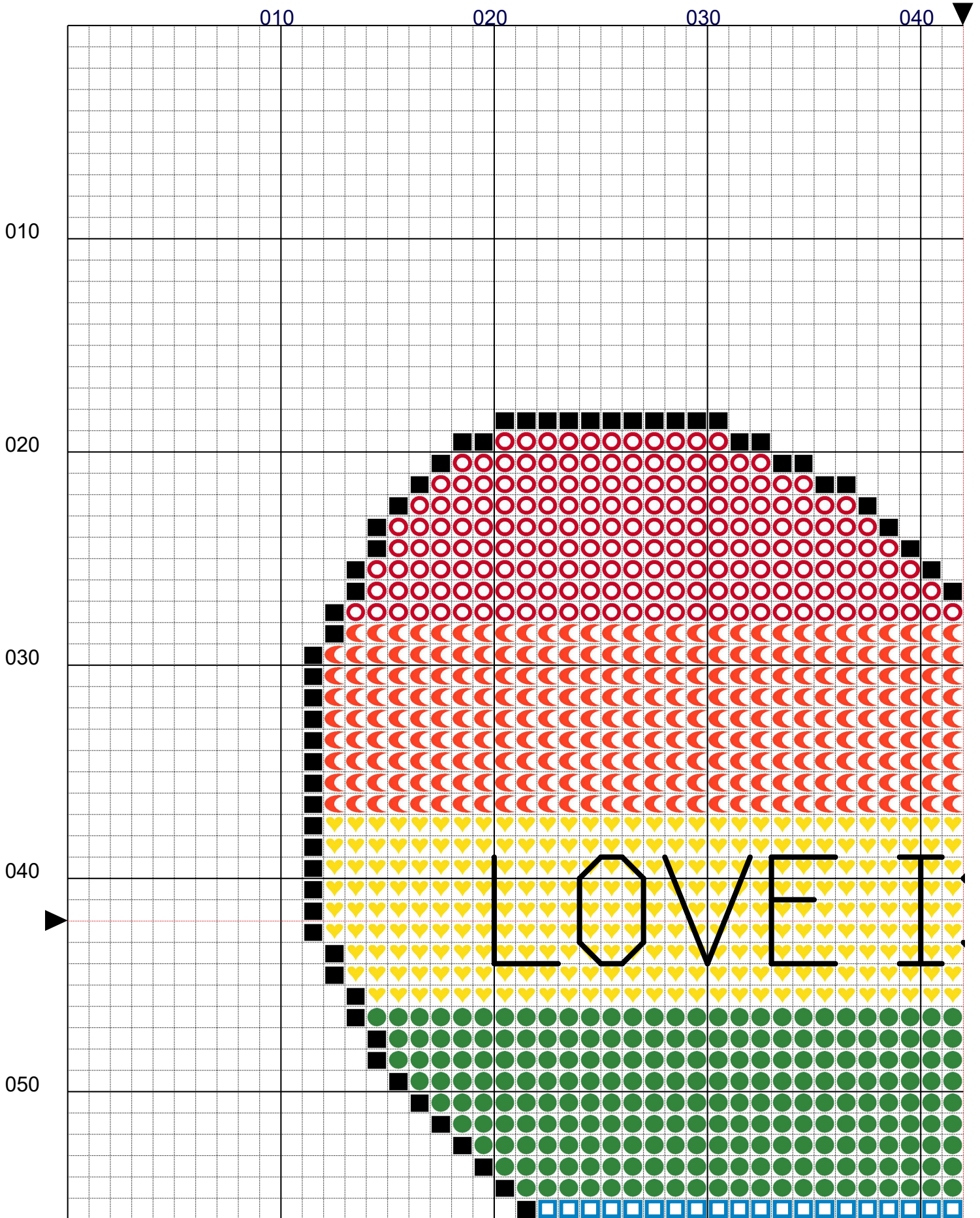
Love is Love



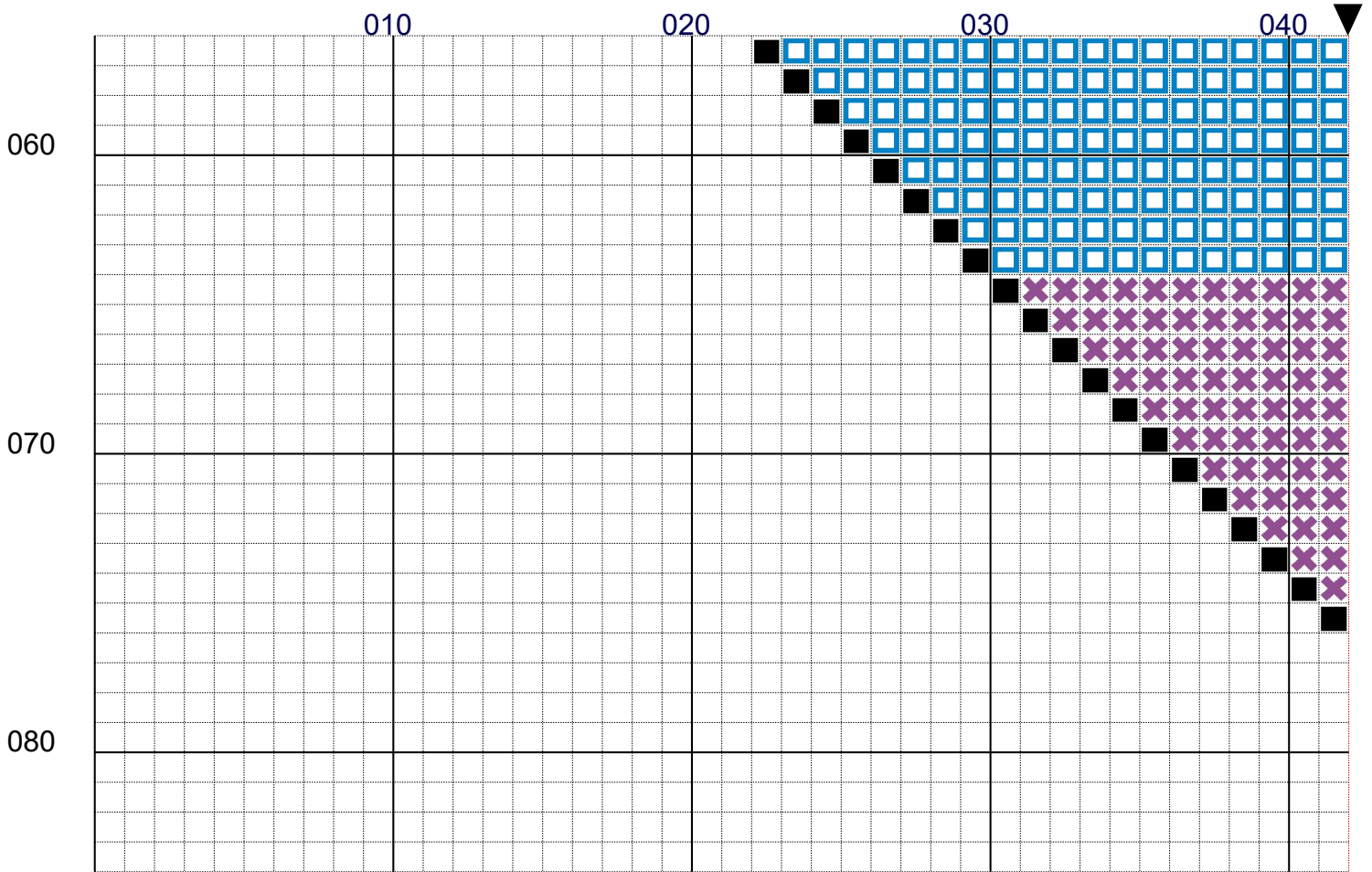
No. stitches: **2,435 (62 x 59)**

Canvas size (14 count Aida): **6" x 6" (15.2cm x 15.2cm)**

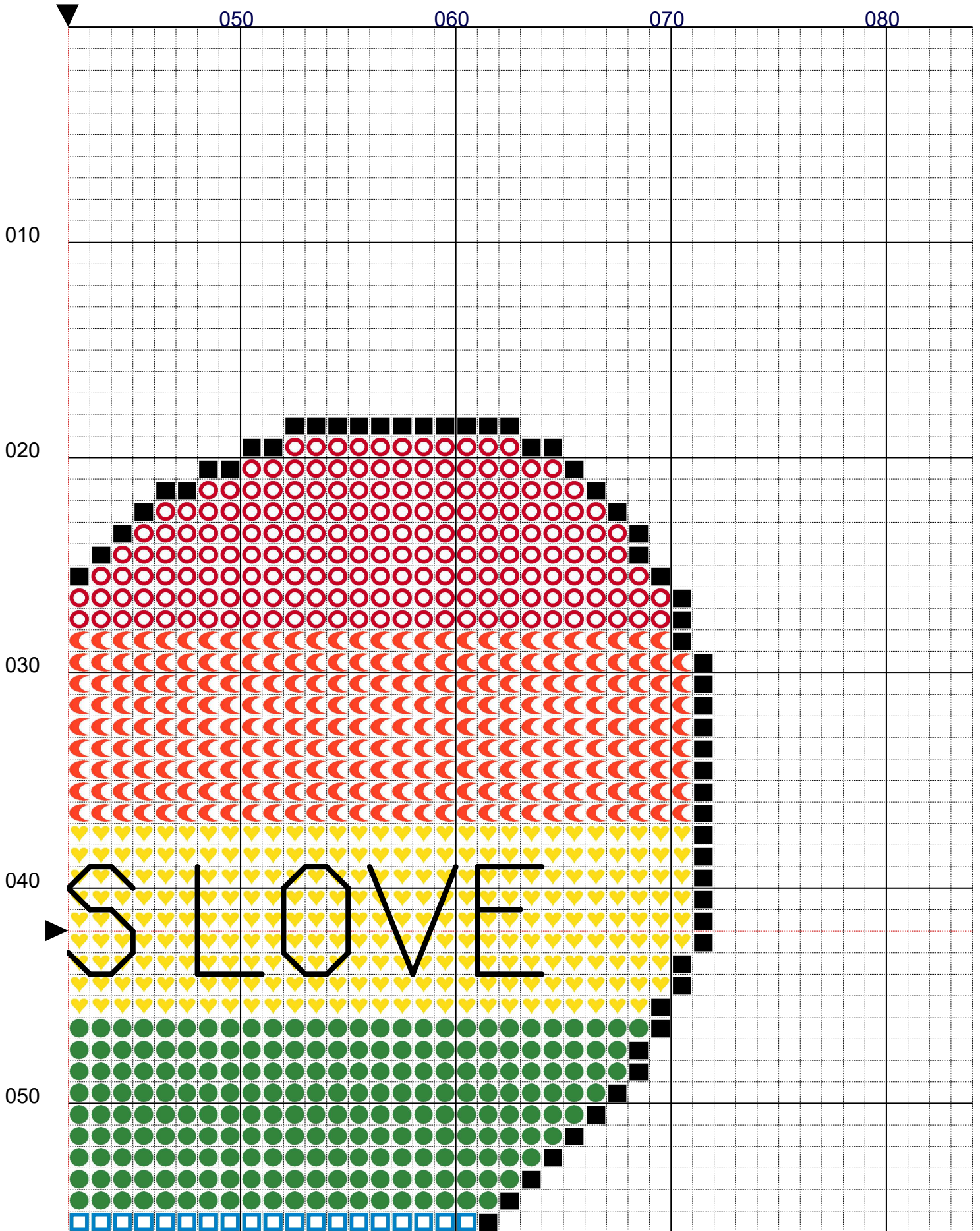
Love is Love



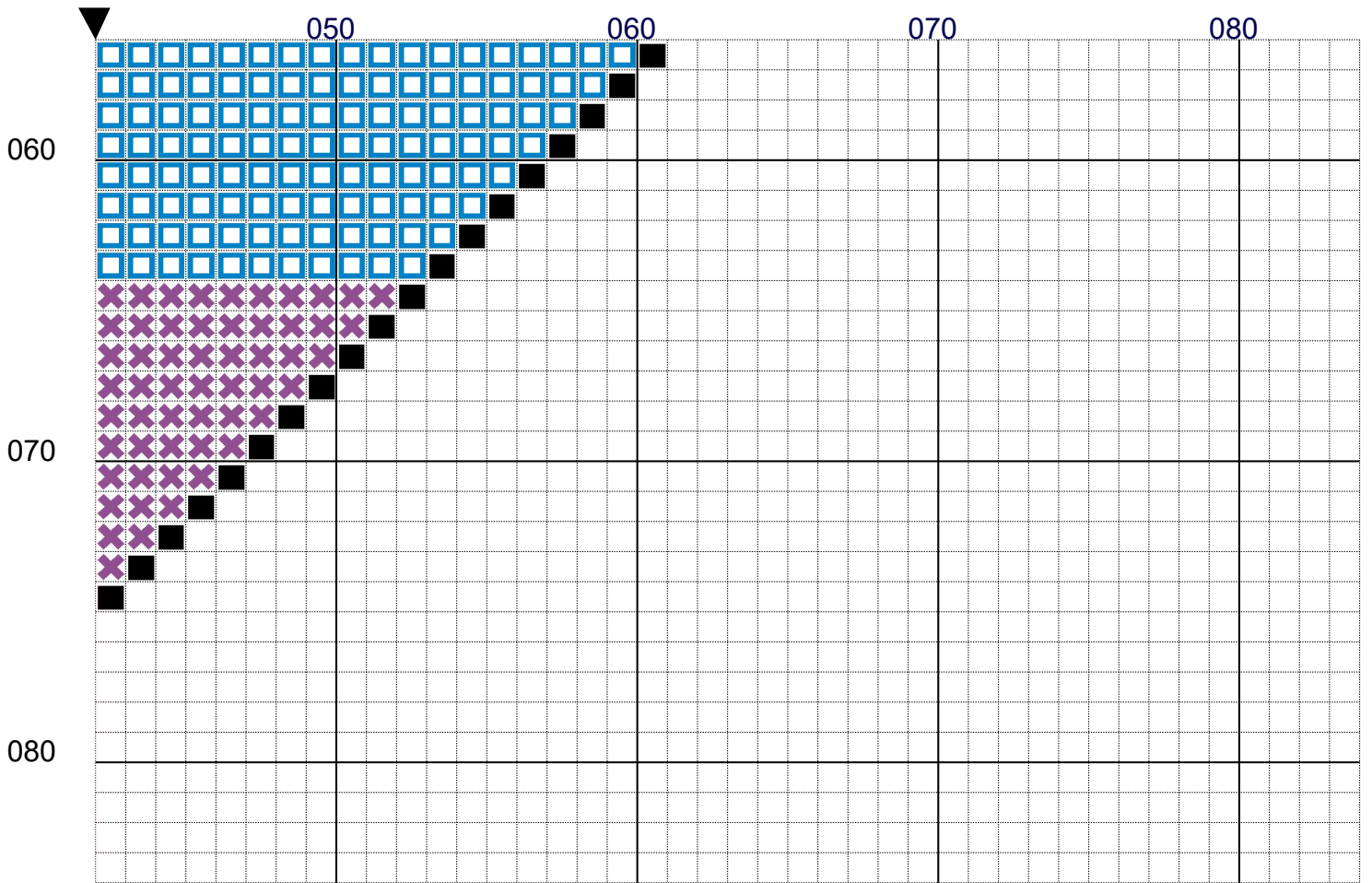
Love is Love



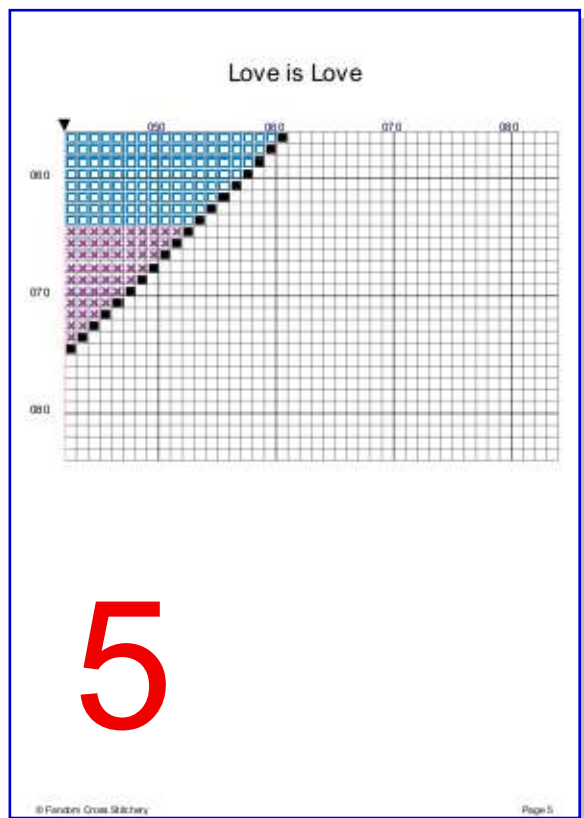
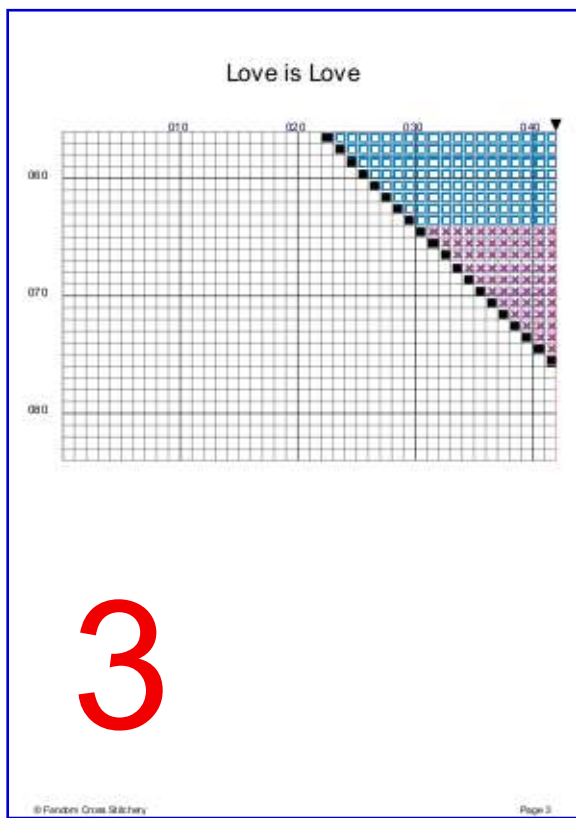
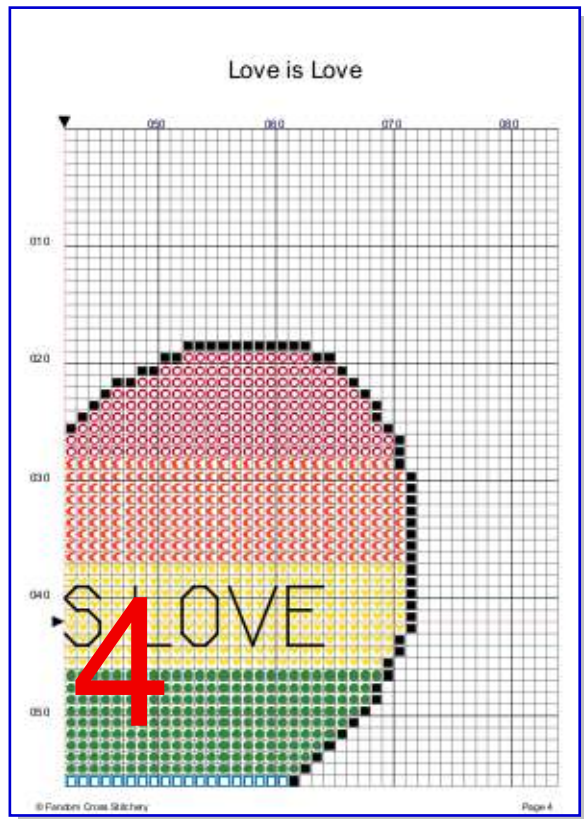
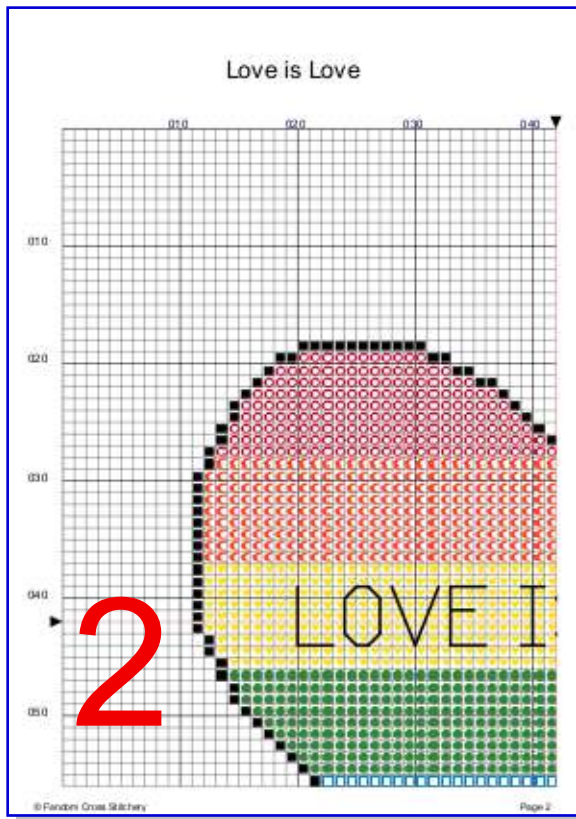
Love is Love



Love is Love



Love is Love



Love is Love

	Number	Name:	Co mm	Bea ds	Str and	Length	Stitches
■	DMC 310	Black		0	2	122.3 in.	158
○	DMC 666	Christmas Red bright		0	2	274.7 in.	388
☾	DMC 608	Burnt Orange		0	2	374.5 in.	529
♥	DMC 307	Lemon		0	2	370.3 in.	523
●	DMC 702	Kelly Green		0	2	309.4 in.	437
□	DMC 3843	Electric Blue		0	2	197.5 in.	279
✕	DMC 553	Violet		0	2	85.7 in.	121

DMC 310	
---------	--